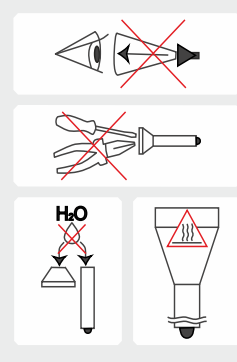


Warnings



1. Always follow the instructions from this manual and recommendations on battery usage.
2. Apply only the recommended power sources.
3. Do not reverse battery polarity.
4. Do not use different power sources together, i.e. old ones with new ones, charged with discharged. Do not use different types of batteries combined as the element with less capacity can be damaged.
5. Do not modify or recast the flashlight and its components as it will deprive you of the warranty.
6. Do not allow water or any other liquid to leak into the flashlight.
7. Do not aim a switched-on flashlight at people's or animals' eyes – it can cause temporary blindness.
8. Do not allow children to use the flashlight without your assistance.

! The producer will not be liable for any harm done to the user if it was caused by improper use of the product.

Care and Storage

It is recommended to clean the threads and O-rings off dirt and old grease once or twice per year. Remember that reliable protection from water and dust cannot be provided by worn out sealing. The fouling as well as lack of lubricant cause fast wear-out of threads and sealing rings. **To clean the threads do the following:**

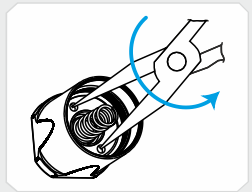
1. Unscrew the tailcap and remove the sealing ring carefully with a toothpick (do not use sharp metal things as they can damage the ring).
2. Wipe the sealing ring thoroughly with a soft cloth (or tissue). Do not use solvents. If the sealing ring is worn out or damaged replace it by a new one.
3. Clean the metal threads with a brush using ethanol. Be careful not to allow the applied liquid to get inside the flashlight or tailcap as it can cause fails in functionality of the flashlight.

After cleaning lubricate the thread and the sealing ring with polyalphaolefin-based silica grease, e.g. Nyogel 760G. The application of automotive and other improper grease can cause swelling and damage of the sealing rings.

In case of active operation and exploitation in dusty environments, it is recommended to perform cleaning and lubricating of the parts as often as required.

In case the rubber button is damaged, it should be replaced. You can also replace the switch with the spring in the same way. Replacement order:

1. Unscrew the tailcap.
2. Unscrew the first washer inside it to take out the switch. To do so you should use needle-nose pliers (round-nose pliers or another tool, the most suitable will be expansion pliers). Use the tool as it is shown at the picture. To replace the rubber button unscrew the second washer under the switch.
3. Replace the rubber button and assemble the parts in inverse sequence.



! Do not disassemble the flashlight except for unscrewing the thread ring gage and replacing the rubber button. There are no other parts in the flashlight that can be replaced by the user.

Service and Warranty

Armytek provides free warranty repair for 10 years (excluding batteries, chargers, switches and connectors which have 2 years warranty) from the date of buy with the document confirming the purchase.

Guarantee does not extend to damage during:

1. Improper usage.
2. Attempts to modify or repair the flashlight by nonqualified specialists.
3. Longtime application in chlorinated or polluted water, or other liquids (other than water).
4. High temperatures and chemicals' exposure (including the exposure of liquid from defected batteries).
5. Usage of low-quality batteries.

Armytek Optoelectronics Inc.
 Web: www.armytek.com Email: service@armytek.com
 Address: 13-85 West Wilmot St, Richmond Hill, Ontario, L4B 1K7, Canada

Specifications are subject to change without notice.

Barracuda

THE MOST TECHNICALLY ADVANCED

USER MANUAL

Thank you for choosing the products of Armytek Optoelectronics Inc., Canada.
 Please read this manual carefully before using the flashlight.

Specifications

Armytek Optoelectronics Inc. is a Canadian manufacturer that produces powerful and reliable flashlights designed especially for your needs. The components made in the USA and Japan. **10 years no-hassle warranty.**

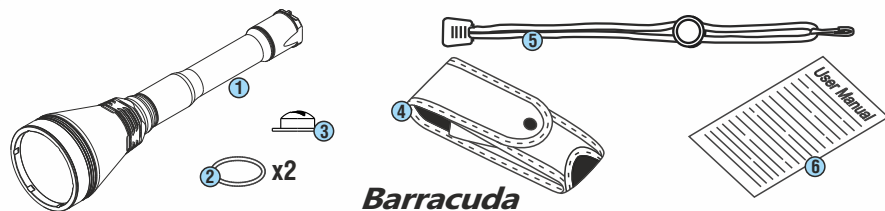
- Extreme brightness – 1450 LED lumens.
- Unprecedented beam distance up to 775 meters for efficient illumination of large areas.
- Ultra-strong materials and robust construction guarantees total protection harsh impacts or vibrations.
- Light-weight flashlight with constant light and fail-proof reliability.
- Simple operation and continuous runtimes – 1.5 hours at maximal mode and almost 17 hours at middle mode.
- Constant brightness with almost discharged batteries and at -25°C outside.
- The highest IP68 dust- and waterproof standard – more than 5 hours at 50 meters depth.
- Guaranteed durability – stands up the recoil of any gun gauge and falling from 30 meters height.

Model	Barracuda XP-L HI	Barracuda XP-L
LED	Cree XP-L High Intensity	Cree XP-L
Optics	Smooth Reflector	
Brightness stabilization type	FULL (constant light)	
Light output, LED / OTF lumens*	1350 / 1150	1450 / 1200
Peak beam intensity, candelas	150000	114000
Hotspot / spill	5° / 40°	
Beam distance*	775 meters	675 meters
Modes, light output (OTF lumens*) and runtimes (measured with 2x18650 Li-Ion 3400mAh until the light output drops to 10% of the initial value)	Turbo	1150 lm / 1.7h
	Main3	370 lm / 6h
	Main2	170 lm / 17h
	Main1	28 lm / 70h
	Firefly	1.7 lm / 30d
	Strobe	15 Hz / 1200 lm / 3.3h
Power source	2x18650 Li-Ion / 4x18350 Li-ion / 4xRCR123 Li-ion / 4xCR123A	
Size and weight (without batteries)	Length 245mm, body diameter 25.4mm, head diameter 64mm, weight 259g	

* Light output for flashlights with Warm light are about 7% less, beam distances are about 3% less.

! We DO NOT RECOMMEND to use low-quality CR123A batteries as a power source for often and continuous flashlight's operation, because they can explode.

Set description



Barracuda

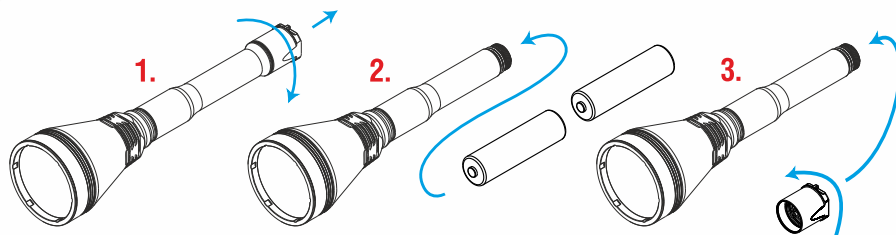
Items included in the package:

- 1 - Flashlight
- 2 - 2 spare O-rings
- 3 - Spare rubber button
- 4 - Holster
- 5 - Lanyard
- 6 - User manual



- ✓ Your flashlight can inconsiderably differ from the pictures in the manual.
- ✓ The producer reserves the right to change the package at his own discretion without modifying this manual.

Initial Service



To set/replace batteries:

1. Unscrew the tailcap.
2. Place the batteries with the positive contact (+) facing the head of the flashlight.
3. Adjust the tailcap and tighten it as far as it can go.



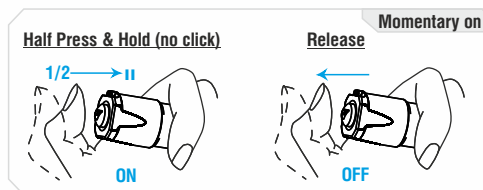
We DO NOT RECOMMEND to leave power sources inside the flashlight for a long storage period, as batteries (especially, non-rechargeable) can leak for various reasons and damage the inner parts of the flashlight. If you want to keep your flashlight in a stand-by state with batteries in then use new and high-quality batteries and store the flashlight in acceptable for batteries operational temperature and revise the batteries' state at least once a month. If you have noticed any signs of batteries' defects then withdraw them from the flashlight and utilize. It is also recommended to replace discharged batteries with new ones before the storage as the chance of leakage is higher with discharged batteries.

Operation

The flashlight has two operational variants:

Turbo – permanently switched light at **Turbo mode** (activated by click with the head of the flashlight tightened up). It's an easy and comfortable operational mode for hunters, especially when the flashlight is used with a remote switch.

Additional – permanently switched light at one of the **Additional modes** at user's choice (activated by click with the head of the flashlight unscrewed to 1/8). **Additional modes:** Firefly, Main1, Main2, Main3, Strobe (hidden).



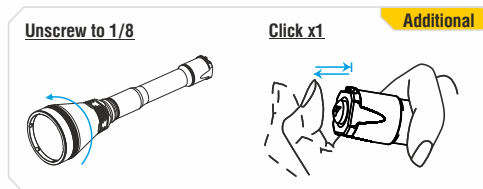
Momentary on.

Any mode switched on by half-pressing of the button and active till the button is released. In **Turbo mode** is suitable for giving signals by short button pressings. In **Additional mode** quick half-pressings can be used to switch modes.



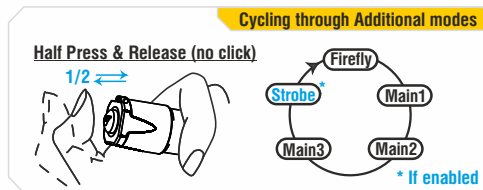
Turbo.

Tighten the head of the flashlight if it is unscrewed. First full click of the button turns the light on. Second full click turns it off.



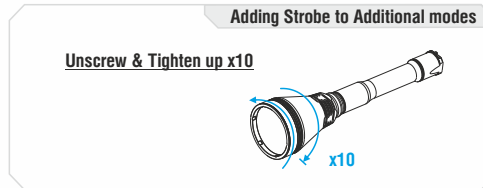
Additional modes (Firefly + 3 Main + Strobe (if enabled)).

If the head of the flashlight is tightened up, unscrew it for 1/8 of a circle. Full click of the button turns the light on at the last used **Additional mode**.



Cycling through Additional modes.

To switch the mode turn the flashlight off and on (by full click or half-pressing). The modes switch cyclically: **Firefly - Main1 - Main2 - Main3 - Strobe** (if enabled).



Adding Strobe to Additional modes.

Strobe is a hidden mode which you can add or remove from the additional modes at your choice. To enable (remove) **Strobe**: unscrew and tighten up the head of the flashlight at least 10 times (while rotation you will change the modes). The pause should be <1 sec.

Automemorizing. After switching off the last used Mode is memorized for quick 1-click access at next switching on.

Lock-out function. Unscrew the tailcap to 1/4 for the protection from accidental switching on.

Low Battery Indication. If the brightness is <25% from the nominal value, the **LED** flashes 2 times ONCE (after 30sec from switching on). If you are not sure if it flashed or not switch the flashlight off and on: in case the battery is low flashes will repeat. Light output decreases to **Firefly mode** at critical level.